



Legislative Update

March 1, 2025



State Court Administrative Office
Judicial Information Services

TABLE OF CONTENTS

Background.....	2
Activities Completed.....	3
Strategic Roadmap.....	3
Activities in Progress.....	5
Continued Execution of Staffing Plan to Scale Up.....	5
Scaling Up Court Onboarding, Identifying Challenges, and Implementing Mitigations.....	6
Court Implementation Metrics.....	7
Financials.....	9
Conclusion.....	11

Background

After decades of debate, in recent years, a clear consensus developed in support of a unified statewide case management system for Michigan trial courts. Key support for this consensus was the 2019 Trial Court Funding Commission report that recommended Michigan’s trial courts move towards a more stable and consistent funding model and an integrated technology infrastructure.¹ To achieve that recommendation, the Michigan Judicial Council’s 2022-25 Strategic Agenda² envisions the adoption of a single statewide unified Case Management System (CMS) to achieve the following goals:

- Increase the consistency and reliability of data gathering and reporting for improved decision-making at both the state and local level;
- Reduce the cost and labor required to compile data for reporting;
- Improve access to the justice system by enabling the broader use of online court services;
- Reduce or eliminate duplication of costs to local governments; and,
- Better position the judicial branch for integration with other justice system stakeholders such as law enforcement, corrections, and child and social welfare agencies.

This vision was supported by all three branches of state government in the historic appropriation signed in 2022 to fund one-time costs to support the build out of the technology infrastructure for a statewide CMS. The enhancements to the JIS Platform and the implementation activities described in this report are mutually supporting initiatives to achieve Michigan’s goal of a statewide CMS by expanding the JIS unified, modern court case life-cycle management solution.

¹ [Trial Court Funding Commission Final Report \(September 6, 2019\)](#)

² [Michigan Judicial Council, 2022-25 Strategic Agenda \(April 13, 2022\)](#)

Activities Completed

Where We Started – Validation of JIS CMS for Statewide Expansion

In October 2022, the State Court Administrative Office (SCAO) began a six-month engagement with the National Center for State Courts (NCSC) to analyze and evaluate Michigan trial court technology and business needs to assess the feasibility of expanding the existing Judicial Information Services (JIS) CMS platform statewide. The NCSC issued its final report in late March 2023 and concluded:

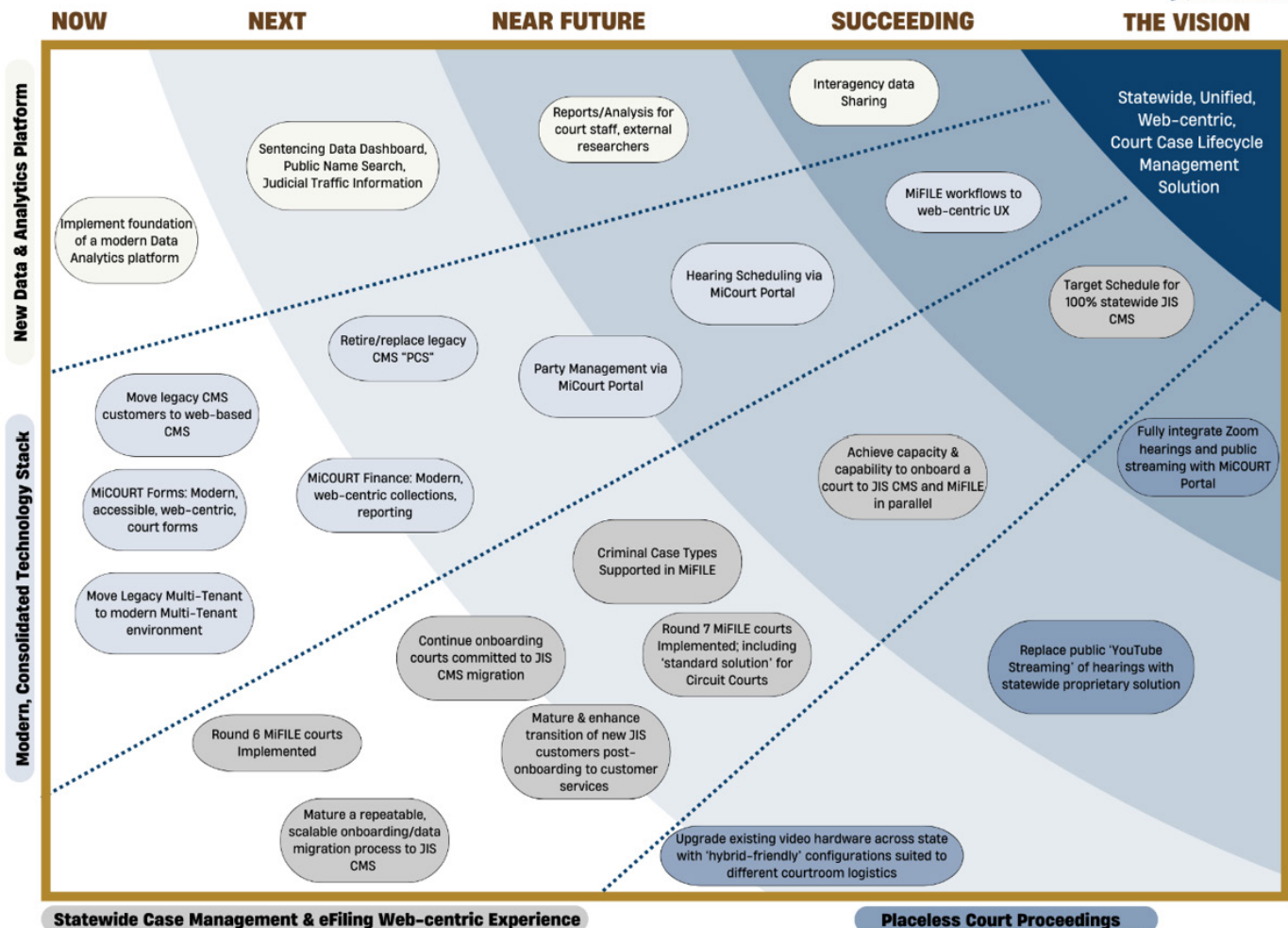
“The JIS CMS is a viable and appropriate solution for the Michigan trial courts to expand and successfully implement as a statewide case management system. JIS provides an existing and more cost-effective solution than commercial packages that would come with higher costs and a much longer timeline for implementation.”

The NCSC report also offered a number of recommendations to assist SCAO in successfully implementing a statewide expansion of this CMS platform.

Strategic Roadmap

The following graphic shows the relative timing of key Now, Next, and Future activities supporting the long-term strategic goals necessary to achieve this vision.

JIS STRATEGIC ROADMAP – FY2025



Completion of NCSC-recommended Planning Activities

SCAO and JIS have implemented concrete processes and/or outcomes for the majority of the NCSC recommendations referred to in our 2024 Update. Specifically the following strategic plans have been created:

- JIS Strategic Roadmap: This plan identifies the key strategic projects, strategies, and policies for the fiscal year, aligned to the Michigan Judicial Council’s strategic agenda and operating plan, and identifies the critical path activities supporting the statewide unified CMS.
- Statewide CMS Implementation Prioritization and Onboarding Plans
- JIS Staffing Plan
- The remaining strategic activity is to establish and initiate a Statewide Unified CMS Governance Plan, for which planning is well underway and initial implementation of a governance body is on track for H1 2025.

Continued Execution of Staffing Plan to Scale Up

JIS developed a staffing plan to appropriately scale up resources—both contractual and full-time state employees (FTEs) following the NCSC analysis. JIS requested and was granted five FTE positions in FY 2025, in addition to the 16 FTE positions that JIS filled in FY 2024.

Contract resources continue to be added and key full time employee roles for FY 2025 are being actively recruited.

FY2024 FTE Positions – Filled (16)	FY2025 FTE Positions – Recruiting (5)
Service Desk Agent (2)	Software Delivery Lead and Scrum Master
Business Analyst (2)	Service Desk Supervisor
Implementation Manager	UX/UI Engineer
Application Developer	IT Security Manager
Software Delivery Lead	Data Architect
Database Administrator	
Server & Storage Manager	
Systems Manager	
Network Manager	
Software Product Owner	
Server & Storage Administrator	
Solution Engineer	
Application Developer (2)	

JIS has requested an additional 12 full time employees for FY 2026 as the next phase of our staffing plan to allow appropriate long-term resource capacity to support and maintain a unified case management solution.

Activities in Progress

Continued Execution of Staffing Plan to Scale Up

In accordance with the recommendations from NCSC, JIS has identified several upgrades to our current JIS CMS. These upgrades will ensure the unified system can meet the usability demands of courts statewide and ensure that the ultimate unified case management system is efficient, supports decision-making, and meets the needs of courts and the public.

- **New Data and Analytics Platform** - The modern Judicial Data Lakehouse will supplement and eventually replace the existing Judicial Data Warehouse (JDW) to better support the data availability, accessibility, trustworthiness, and completeness goals of the statewide unified technology platform. The bid for this work was awarded in H1 2024 and this multi-year initiative kicked off in September 2024.
- **Modern Court Forms Interface** - The conversion of court forms to the web-enabled platform will allow JIS to update and launch new forms more quickly and at a lower cost. This platform will also reduce the support burden of managing and troubleshooting client printing, one of the leading causes of support tickets. An initial set of web-enabled forms is in pilot testing, and JIS staff can now create and update forms using the new no-code solution to ensure an efficient and cost-effective method for releasing JIS forms on a quarterly basis.
- **Modern Finance and Collection Components** - These new CMS components, delivered through the web-enabled platform, will supplement the existing financial capabilities of today's JIS CMS and add new financial workflows, enhancing standardization and court efficiency. The collections component involving payment plans was completed and piloted with several courts. Work on overdue notices and garnishment has begun, and a tool to migrate existing, third-party collections data into the new solution is in progress.
- **Contemporary Data Visualization Features** - JIS continues to develop new reports, analytical capabilities, and improved data visualizations within the web-enabled MiCOURT platform that facilitate more efficient court processes than the traditional CMS reporting capabilities allow. JIS increased staffing and throughput on this team in 2024 to better meet the demands of the courts for these new, modern reports.
- **Enhanced Integration between MiFILE and JIS CMS** - Full standard integration between MiFILE (the statewide e-filing platform) and JIS's trial court case management system (TCS) was completed and tested in 2024, and enhancements were added to the integration between MiFILE and JIS's district court case management system (DCS). This greater coupling creates a more seamless user experience for court staff working with both products and facilitates better communication between e-filers and the court. Improvements were also made to speed and performance of the integrated solutions. Enhancements to standardize and control data-entry and automate document processing were made to eliminate related integration errors and improve efficiency for the courts.



- **Transition of existing JIS Customers to New JIS Web-Enabled Solutions** - While most JIS circuit courts, and all new JIS Courts (both circuit and district) use the JIS full web-based CMS solution, long-time JIS district courts have not yet migrated to the web-enabled platform. Currently, there are six district courts and one circuit court in flight to transition. In 2024, JIS created a strategy to migrate courts from JIS legacy probate CMS to the web-based CMS solution. Data migration tools were designed and developed and JIS plans to pilot the first probate court migration in 2025. Migrating these courts to the unified CMS is a technical pre-requisite to their implementing MiFILE, so this project will also increase usage of the statewide e-filing solution.

Scaling up Court Onboarding, Identifying Challenges, and Implementing Mitigations

JIS has been successful in the first phase of scaling our capacity for court onboarding to the JIS CMS. This includes forming a second implementation team, meeting full-time and contractor staffing goals for that team, and engaging with additional qualified third-party vendors to provide “accelerator” capacity—specifically in regard to data migration from legacy systems to the JIS CMS. The two most significant challenges (and related mitigation approaches) identified to-date with onboarding courts from legacy systems to JIS CMS are:

- **Data Migration** - The complexity, inconsistency, and proprietary/limited access nature of historical data from onboarding courts have presented challenges to target schedules for overall onboarding.
 - o **Mitigation Approach for Data Migration Challenges** - Pre-engagement expectations with onboarding courts (regarding source data and availability of court subject-matter experts) were further solidified in 2024. A standard Memorandum of Understanding (MOU) template was created, and an MOU is now established between JIS and each court at the time of engagement. JIS will also continue to leverage third-party vendors specializing in data migrations. In 2024, JIS also identified opportunities to develop technical solutions for standardization and automation to help streamline internal processes related to migration of court data. Development of such tools will begin in 2025.

- **Local Court Effort/Availability of Key Resources** - The work required by onboarding courts to provide the subject matter expertise on the workings of their legacy systems, validating data migration accuracy, managing the organizational change required to adopt a new CMS was initially underestimated. Local courts have difficulty providing a significant percentage of key resources daily/weekly effort to the onboarding processes and still maintain adequate court operations.
 - **Mitigation Approach for Local Court Availability** - SCAO has implemented a program to provide reimbursement for expenditures at the local funding unit level to cover hourly overtime or temporary staff costs in order to allow for dedicated effort from the court for onboarding. JIS has stipulated in the MOU with each court the effort commitment expected from court and/or clerk staff. However, challenges still remain in the ability of some courts to focus on and achieve onboarding commitments. SCAO and JIS will continue to work with individual courts and court leadership to emphasize the importance of these onboarding activities and support courts in their efforts to accomplish their onboarding commitments.

Court Implementation Metrics

At the commencement of the FY 2023 statewide appropriation (October 2022), 243 of Michigan’s 302 courts were already using JIS CMS:

- 67 circuit
- 103 district
- 73 probate

As of February 12, 2025, 250 of 302 courts are using JIS CMS:

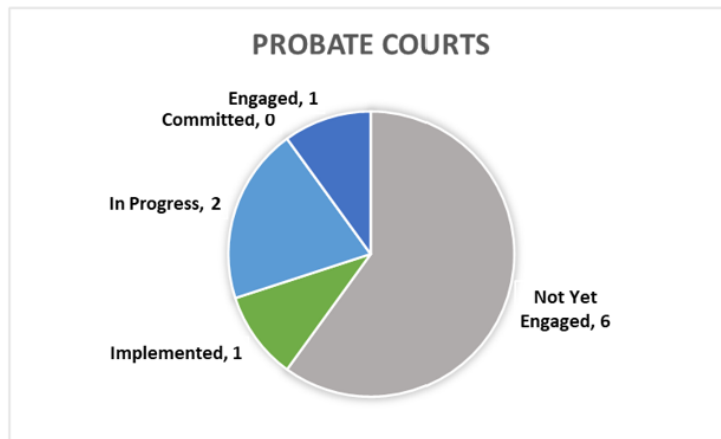
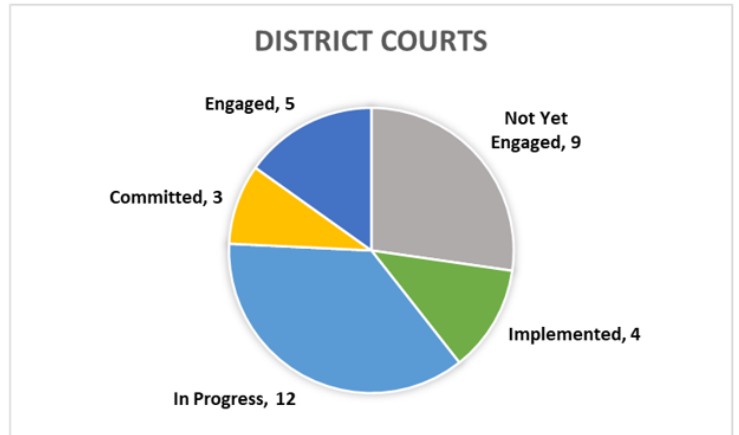
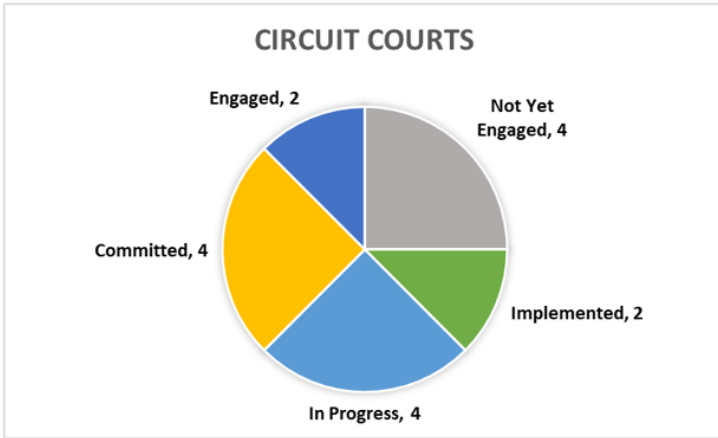
- 69 circuit
- 107 district
- 74 probate



From October 2022 through Q4-2023 SCAO and JIS were engaged in activities to validate our approach to statewide expansion, scale operational teams up appropriately, and plan for the overall statewide expansion (refer to the March 1, 2024 Legislative Report, pages 3-4).

From March 1, 2024 through December 31, 2024, six courts were implemented. As of February 12, 2025, 18 courts are in the process of implementation, nine courts have committed to move to JIS, and eight courts have engaged with JIS in discussions or software demonstrations.

The following graphic shows the current status of implementations.



Implementations Completed

Six courts have migrated to the statewide system since March 2024: Antrim County District, Grand Traverse County District, Leelanau County District, Delta County Circuit, Ottawa County Circuit, and Delta County Probate.

Implementations in Progress

As of February 12, 2025, JIS is currently onboarding 18 courts:

Court	Progress	Anticipated Go-Live
94th District Court, Delta County	48% complete	2Q 2025
85-1 District Court, Benzie Co; and 85-2 District Court, Manistee	16% complete	3Q 2025
45th Circuit Court, St. Joseph County	15% complete	3Q 2025
81-1 District Court, Alcona; 81-2 District Court, Arenac; 81-3 District Court, Iosco; and 81-4 District Court, Oscoda	12% complete	3Q 2025
84-1 District Court, Missaukee; and 84-2 District Court, Wexford	7% complete	4Q 2025
87B District Court, Crawford; and 87C District Court, Kalkaska	3% complete	4Q 2025
30th Circuit Court, Ingham County; and 33rd Probate Court, Ingham County	25% complete	2H 2025
70th District Court, Saginaw	5% complete	1H 2026
10th Circuit Court, Saginaw County; and 73rd Probate Court, Saginaw County	1% complete	1H 2026
6th Circuit Court, Oakland County	1% complete	TBD

JIS requests frequent feedback to continuously improve the ease and efficiency of onboarding courts. This is a portion of feedback from a recently migrated court:

“...As with all data migration, the process was not perfect, but with each problem our JIS team had a solution in place to combat the issues the circuit court may face. On top of this, the assistance from the JIS both pre-go-live and post go-live has lightened the load and allowed for a transition that did not create an abundance of stress on our processes and staff.”

Financials

\$150 million one-time appropriation

A detailed breakdown of expenditures from the \$150 million one-time appropriations for the current and previous fiscal years is provided in the table below, followed by a narrative. Funds currently obligated by contract for work underway are also noted. JIS continues to follow the plan to accelerate and scale court onboarding and related supporting initiatives which will significantly increase spending in subsequent fiscal years.



Expenditures	
FY 2023 - \$150M One-time appropriation	\$5,879,452
FY 2024 - \$150M One-time appropriation	\$15,762,352
• Contractors/Consultants	\$11,964,874
• Data Migrations	\$2,446,459
• FTE Staffing	\$664,573
• Software & Hardware Licensing/Purchase	\$637,573
• Misc.	\$48,971
FY 2025 - \$150M (One-time appropriation first four months)	\$9,115,013
• Contractors/Consultants	\$7,570,054
• Data Migrations	\$1,107,762
• FTE Staffing	\$221,162
• Software & Hardware Licensing/Purchase	\$216,035
Expenditures Total	\$30,756,817
Obligated Funds	\$33,929,144
Expenditures & Obligated Funds Total	\$64,685,961

Increased ongoing operating appropriation

A breakdown of expenditures from increased appropriations to operate the larger CMS for the current and previous fiscal years are provided in the table below. Expenditures in FY 2024 include \$8,551,727 from the increased ongoing operating costs appropriation. As of January 31, 2025, expenditures for FY 2025 include \$2,929,377 from the increased ongoing operating costs appropriation. JIS continues to scale up operational resources for the ongoing support of the additional courts and the larger system as a whole.

FY 2024 Increased ongoing operating costs appropriation	\$8,551,727
• Contractors/Consultants	\$27,811
• FTE Staffing	\$6,604,575
• Software & Hardware Licensing/Purchase	\$1,823,674
• Misc	\$95,667
FY 2025 Increased ongoing operating costs appropriation (first four months)³	\$2,929,377
• Contractors/Consultants	\$69,399
• FTE Staffing	\$2,275,175
• Software & Hardware Licensing/Purchase	\$548,148
• Misc	\$36,655

³ Ongoing operation of CMS costs is much more than is reflected in the recent annual increases to support growth. These numbers do not include annual cost across Supreme Court and SCAO appropriations including staff time for continuous improvement of JIS CMS functionality, security, and consistency, user success services, general planning, legal analysis, court meetings, internal policy analysis, horizontal data integration, enhancing governance structures and standards, among other costs. As the CMS becomes more unified it will require continued and additional work in areas such as these to review, assess, and problem-solve the challenges of each migration.

Contractors/Consultants

JIS is leveraging contract resources and consultants (experts with specialized skills and other IT professionals to supplement capacity) to accelerate development efforts as JIS matures the platform and provide more capacity and specialized skills for implementation efforts. As JIS approaches the completion of the statewide expansion, the use of contractors and consultants can be reduced as we transition to steady state.

Data Migrations

JIS has partnered with two vendors who provide expertise and capacity to migrate legacy court case management data to the JIS CMS platform. This ensures that courts going through a data migration have access to their active and historical data in the statewide platform. We have increased the use of these partners and will continue to mature our utilization of these partners.

Full Time Equivalent (FTE) Staffing

JIS currently supports staff dedicated to the expansion of the statewide platform as well as the maturation of functionality and is in the process of adding additional staff to increase capacity. The FTE expenditures identified during FY 23 and FY 24 under the \$150 million appropriation are representative of current JIS employees shifting full focus to the CMS expansion and coding all time to the appropriation. Once the expansion is complete, those FTEs will continue to work on other prioritized projects as directed.

Software & Hardware Licensing/Purchase

JIS is investing in the additional licensing and capacity for the needs of the CMS platform as it is expanding and to enable the functional maturation of that platform. This includes leveraging cloud-based computing, increasing information security tools and monitoring, and expanding the networking capabilities needed for additional courts to use the statewide platform.

Miscellaneous

These expenditures include telecommunications, travel, print materials, and other miscellaneous items associated with CMS platform maturity and engagement with non-JIS courts.

Conclusion

We are confident and excited for the opportunity to continue progress towards a unified statewide case management system and offer continued gratitude for the Legislature's support of this strategic endeavor. Working together, our CMS will ultimately be a model for other states across the nation.

ONE COURT OF JUSTICE WEBSITE

courts.mi.gov

X

x.com/misupremecourt

FACEBOOK

facebook.com/misupremecourt

LINKEDIN

linkedin.com/company/michigan-supreme-court

INSTAGRAM

instagram.com/michigansupremecourt

YOUTUBE

youtube.com/michigancourts

