

## Location

The Michigan Hall of Justice is located between Allegan and Ottawa streets off Martin Luther King, Jr., Boulevard. It is six blocks west of the State Capitol and north of the Michigan Historical Center.

Visitor parking is available off Allegan Street. Buses park south of the Michigan Historical Center, off Kalamazoo Street.

925 West Ottawa Street  
Lansing, MI 48915  
Web site: [courts.michigan.gov/](http://courts.michigan.gov/)



## Public Restrooms

On the first floor, public restrooms are located in the Learning Center, at the end of the south wing, and in the north wing off the rotunda.

On all other floors, restrooms are located across the rotunda from the public elevators.



**One Court of Justice**  
**Lansing, Michigan**

## Michigan Hall of Justice



## Michigan Hall of Justice

The Michigan Hall of Justice, dedicated in 2002, is headquarters for the state's judicial branch of government. Built of limestone and capped by a glass dome, the six-story Hall of Justice stands at the west end of the Capitol Complex. Facing the State Capitol, it stands independent yet in relation to the location of the executive and legislative branches of government, symbolic of how Michigan's government works.



## About the Hall of Justice

- 6 stories.
- 10 elevators.
- 16-foot-high skylight dome.
- 224 windows.
- 1,200 interior doors.
- 2,930 tons of steel.
- 14,000 pieces of limestone.
- 16,000 cubic yards of concrete.
- 280,000 square feet.

## Learning Center

Located on the first floor, the Learning Center is an exhibit gallery that helps to educate the public about the judicial branch of government. The center is filled with hands-on activities for visitors from elementary to adult. Free, guided tours are available by reservation on Monday–Friday, 9 a.m.–4 p.m., except court holidays. More information is available at [courts.mi.gov/learningcenter](http://courts.mi.gov/learningcenter) or by calling 517-373-7171.

# Courtrooms

The Hall of Justice houses two appellate courtrooms. The Supreme Court courtroom is located on the sixth floor, and the Court of Appeals courtroom is on the second floor. Both courtrooms are open to the public when court is in session and can be reached by public elevators located north of the rotunda.

## Michigan Supreme Court

The Michigan Supreme Court is the state's highest court. The Court hears cases at its discretion and receives about 2,000 "applications for leave to appeal" per year. Each justice reviews every case to determine whether leave should be granted. Less than 10 percent of cases are granted leave.

Cases may be decided by order, with or without an opinion, a written explanation of the decision. These orders may affirm or reverse the Michigan Court of Appeals, remand a case to the trial court, or adopt a Court of Appeals opinion.

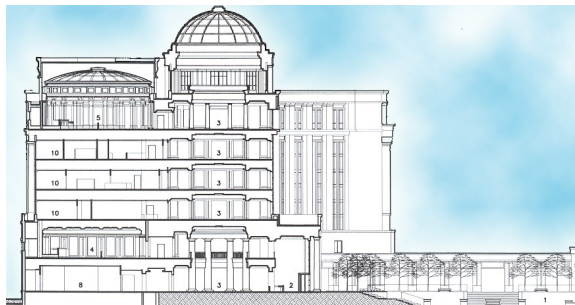
The Court hears oral arguments in about 100 cases, October–May of each term. Opinions are released throughout the term (August 1–July 31), following oral arguments.

The Supreme Court courtroom is located on the highest floor of the Hall of Justice, symbolic of the position of the Court within the state system. The decor, furnishings, and mahogany bench reflect the feel of the 1870s courtroom that housed the Supreme Court for nearly 90 years in the Capitol. Unlike typical American courtrooms, the Supreme Court courtroom is round. Reminiscent of a Native American peacemaking circle in which young and old have a voice, it reminds visitors of Michigan's first lawgivers.



### About the Supreme Court

- Established by the Michigan Constitution of 1835.
- Decisions determined by a majority of the entire Court.
- Seven justices, elected to eight-year terms.
- Responsible for administrative supervision of all state courts.



## Michigan Court of Appeals

The Court of Appeals – created by the Michigan Constitution of 1963 – is a high-volume intermediate appellate court. The judges of the Court of Appeals sit state-wide, although they are elected or appointed from one of four districts. Located in Lansing, the Fourth District Court of Appeals courtroom is designed to be accessible and user-friendly.

Court of Appeals hearings are held year-round before three-judge panels in Detroit, Lansing, and Grand Rapids. Hearings are also scheduled in Marquette and in a northern Lower Peninsula location in the spring and fall of each year. Judges are randomly assigned to panels to sit in all courtroom locations. At least two of the three judges on a panel must agree on the ruling in a case for it to be binding. Decisions of the court may generally be appealed to the Michigan Supreme Court.

### Court of Claims

The Court of Claims is located in the Michigan Court of Appeals. The Court of Claims is a court of statewide, limited jurisdiction to hear and determine all civil actions filed against the State of Michigan and its agencies. Each Court of Claims case is heard by a single judge. The Court of Claims operates much like any other Michigan circuit court; however, there is no right to a jury trial.



### About the Court of Appeals

- Established by the Michigan Constitution of 1963.
- Decisions determined by a majority of a three-judge panel.
- Judges are elected to six-year terms.
- Most cases are heard "by right." The Court of Appeals must hear the case.
- Court of Claims is located in the Court of Appeals.

